



BUILDING CONSTRUCTION

Trade catalog



TABLE OF CONTENTS



Concrete and Foundations



Formwork

- Cordless battery platform 22V
- Cordless impact wrench SIW 22-A
- Cordless rotary hammer TE-4-A22 with optional dust removal system
- Rotating laser PR 30-HVS A12
- Cordless circular saw SCW 22-A
- Formwork fastener X-FS
- Screw anchor Kwik HUS
- Cordless circular saw SCM 22-A

Layout



- Robotic total stations POS 150/180
- Rotating laser PR 300-HV2S
- Laser range meter PD-CS
- Layout tool PLT 300

Doweling



- SAFE-SET** Technology with HIT-HY 200
- Hammer drill bit TE-YD
- Combihammer TE 70-ATC/AVR
- Universal vacuum cleaner VC 150 6-X
- Injectable mortar HIT-HY 200

Concrete Pour and Finish



- Diamond grinder DG 150
- Rotating laser PR 2-HS A12
- Breaker TE 500-AVR with dust removal system TE-DRS-B
- Universal vacuum cleaner VC 150 10-XE
- Angle grinder 500-12D
- Diamond cup wheels

Masonry



Tuckpointing

- Angle grinder 500-12D
- Dust extraction hood DC-EX
- Cordless combihammer TE 30-A36
- Joint chisel TE-Y FGM
- Tuck point blades SPX/SP
- Universal vacuum cleaner VC 150 10-XE



Masonry Fastening

- Injectable mortar HIT-HY 270
- Universal vacuum cleaner VC 150 10-XE
- Dust removal system TE DRS-Y
- SDS-max rotary hammer TE 60-ATC/AVR
- Cordless combihammer TE 30-A36
- Mechanical anchors selector chart



Masonry Cutting

- Diamond cutter DCH 300
- Universal vacuum cleaner VC 300-17 X
- Hand-held gas saw DSH 700-X
- Integrated water pump DSH-P
- Equidist diamond cutting discs EQD SPX
- Cordless angle grinder AG 500-A22



Cutting and Coring

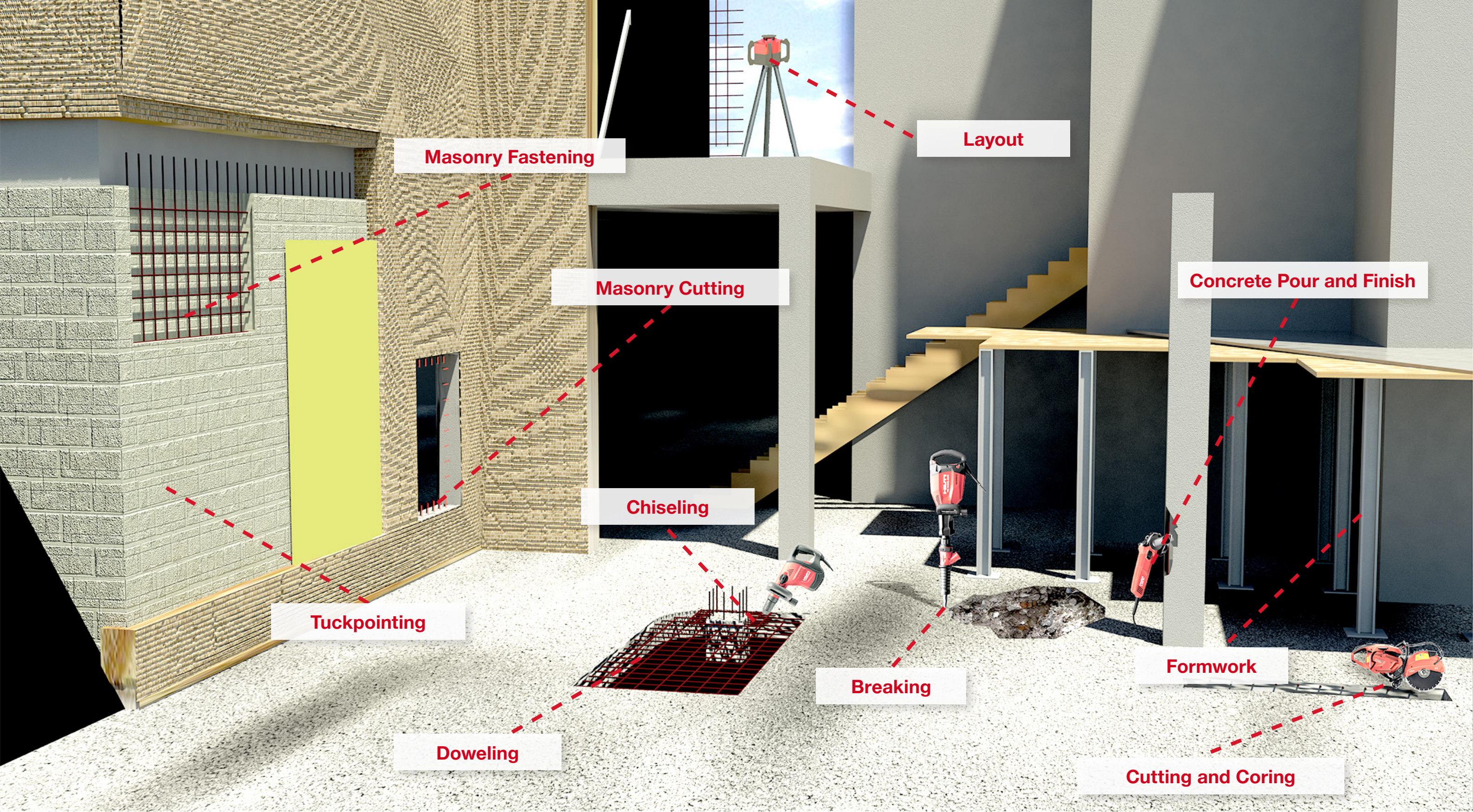
- Hand-held gas saw DSH 700-X
- Diamond coring tool DD 250
- Core Bit Portfolio P, SP, SPX
- Water management system DD-WMS 100
- Cordless/Corded orbital reciprocating saws
WSR 22-A/WSR 1400-PE
- Reciprocating saw blades

Demolition



Breaking

- Breaker TE 500-AVR
- Breaker TE 700-AVR
- Breaker TE 800-AVR
- Breaker TE 1000-AVR
- Breaker TE 2000-AVR
- Breaker TE 3000-AVR



Masonry Fastening

Layout

Masonry Cutting

Concrete Pour and Finish

Chiseling

Tuckpointing

Formwork

Breaking

Doweling

Cutting and Coring

**APPLICATION
EXPERTS**

**Building
Construction**

Our unique combination of products, services, and software are always paired with personal, expert support. From design to demolition, our goal is to provide everything you need to get the job done right the first time.

The Hilti logo is displayed in white, bold, uppercase letters within a red rectangular border. It is positioned in the upper left corner of the page, partially overlapping a white diagonal graphic element.A photograph of two men in construction attire. The man on the left is wearing a red jacket and a red hard hat, smiling. The man on the right is wearing a tan and dark blue jacket and a white hard hat, looking towards the first man. They are standing on a construction site with scaffolding and rebar visible in the background.

HILTI

ABOUT THE HILTI GROUP

Building Construction

At Hilti, we are committed to our customers. The family-owned company has grown into a global team of experts, but we remain committed to the close relationships with you, our customers, that have helped us become the go to company for construction products, software and services.

From our first low-velocity tool in the 1950s to today's complete line-up of solutions, each major jobsite application is covered by products designed with you in mind. Now, more than 3,000 U.S. and Canadian team members are working together to put you first. With one-of-a-kind services like Tool Fleet Management, the industry's best tool warranty, and specialists in areas like structural engineering and fire protection, we have grown to be the brand of choice for building construction professionals.



FORMWORK / Concrete and Foundations

From ripping plywood to building and setting forms, our tools and fasteners are designed to increase your productivity and safety every step of the way.



CORDLESS BATTERY PLATFORM 22V

The new 22V battery is our longest lasting and most durable battery. It delivers unparalleled run time in its class, and the Improved Cell Management System allows for more complete charging, giving you more work per charge. Each cell is double tapped with high quality welds to ensure consistent power and allow for maximum draw. We seal the electronics against moisture, water and dust to help ensure your tools keep working, even in the harshest conditions. We also encase our tools and batteries in a glass fiber housing that has four times the impact resistance of standard ABS plastic.



Cordless impact wrench SIW 10-A22

Our SIW 10-A22 delivers more torque in a compact size for fastening metal bolts, wood lag bolts and concrete screw anchors like our KWIK HUS EZ. The impact mechanism has been finely tuned for maximum efficiency and completes more fastenings per battery charge. A specially designed motor provides maximum torque and a longer tool life.



NEW

Cordless rotary hammer TE 6 A22

This extremely powerful rotary hammer is designed for serial anchor drilling. It is lightweight and convenient for superior drilling with a forward/reverse switch and a middle locked position. Active Vibration Reduction (AVR) is designed to reduce vibration. The TE 6-A22 has high runtime flexibility, is compatible with 22V batteries, and has a fast charging time.



Rotating laser PR 30-HVS A12

The PR 30-HVS A12 rotating laser features newly designed shock-absorbing handles and a receiver holder, as well as a tough, IP 66 protected housing. It's specifically designed to quickly and accurately level, align or square while providing the most reliable performance.



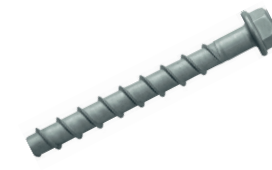
Cordless wood circular saw SCW 22-A

The SCW 22-A cordless circular saw is designed for cutting formwork, oriented strand board, plywood, chipboard, plastics, rafters and battens. This saw is ideal for cut-as-you-go work with easy-to-read markings, simple adjustments, and an electric blade brake that stops the tool quickly when the trigger is released.



Formwork fastener X-FS

The new X-FS formstop makes installation up to five times faster. Proper positioning of concrete wall or column forms is critical to allow flow of concrete in and around rebar, which is why our formstop is designed to precisely position form panels before concrete is poured.



Screw anchor Kwik HUS

The Kwik HUS screw anchor can be reused up to twenty times depending on anchor diameter and concrete compressive strength, significantly lowering your cost to improve profitability and productivity. We've developed matched-diameter "go/no-go" HRG gauges to ensure the anchor is within its useful life prior to reuse.



Cordless metal circular saw SCM 22-A

Make fast, smooth cuts with the SCM 22-A. This saw cuts ferrous metal with power, precision and speed and is perfectly portable for easy movement around the jobsite. Try it with matching blades for easy thick to thin material cutting.



we want to hear from you



Tool warranty. Some limitations apply. Contact Hilti for details.



LAYOUT / Concrete and Foundations

Fast and easy-to-use, our rotating lasers are the ideal tools for setting slopes, leveling, aligning and squaring applications.



ROBOTIC TOTAL STATIONS POS 150 / 180

The POS 180 measures distances to surfaces without the need for reflectors. The tool is designed for laying out positions, leveling for excavations or formwork, and fastening points on floors and ceilings. There is no locking required with simultaneous pivoting and targeting. The POS 180 has a clearly legible touch screen with large, easy to follow graphics and an intuitive interface.

[Watch video](#)



Rotating laser PR 300-HV2S

Designed to withstand the toughest jobsite conditions, the PR 300-HV2S rotating laser is an easy-to-use and reliable system for a host of leveling, aligning, sloping and squaring tasks. It provides horizontal, vertical and dual slope measurements with our Auto Alignment System™ and Automatic E-Targeting.

[Watch video](#)



Laser range meter PD-CS

Estimating material needs and preparing quotes has never been easy. The new Hilti Laser Range Meter PD-CS is here to help. The PD-CS captures and saves measurement data directly onto digital photographs taken by an integrated camera and laser module, doing away with messy paper trails. Users can document jobsites, add comments, and export data into a single report. Digitize the entire measurement process from measuring distances, to adding context with pictures or text, to sharing data over BT, Wi-Fi and Micro USB — all with one easy-to-use tool.



Layout tool PLT 300

The PLT 300 is an easy-to-use construction tool for one-person layout and measuring. It features automatic tilt compensation with no need for manual leveling. The PLT 300 is designed for laying out formwork, excavation and creating 2D and 3D positions on the jobsite.

[Watch video](#)



we want to hear from you



Tool warranty. Some limitations apply. Contact Hilti for details.



DOWELING

Concrete and Foundations

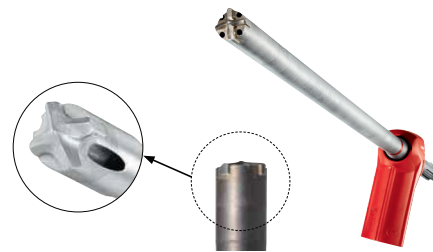
SAFESET

Our SafeSet™ Technology system increases productivity when doweling or setting anchor rods, giving you more confidence in their proper installation. With faster drill times and no manual hole cleaning required, SafeSet™ Technology helps you work smarter.



SAFESET TECHNOLOGY WITH HIT-HY 200

The SafeSet™ designation indicates that an adhesive anchor is approved for installation using one of our non-cleaning or self-cleaning systems. Our non-cleaning installation solution includes the HIT-Z anchor rods, which allow dust to be left in the anchor hole without impacting holding values. Self-cleaning installation is as simple as it sounds: The installer uses a Hilti hollow drill bit to drill the anchor hole. The dust is sucked out of the hole during the drilling process with a Hilti vacuum cleaner, eliminating the need for additional cleaning.



Hammer drill bit TE-YD

The TE-YD hollow drill bit eliminates the need for manually cleaning holes when used as part of our SafeSet™ Technology system to improve productivity by as much as 60%.

[Watch video](#)



Combihammer TE 70-ATC/AVR

The TE 70-ATC/AVR is best in its combihammer class with up to 40% faster drilling than the competition and unmatched operator safety and comfort with its advanced Active Torque Control (ATC) and Active Vibration Reduction (AVR) systems. The center of gravity is close to the grip for balance that is the best in its class. Hilti Active Torque Control (ATC) stops the motor almost instantly if the bit binds and causes the housing to begin rotating too quickly, reducing the potential of sudden rotation of the combihammer.

[Watch video](#)



Universal vacuum cleaner VC 150 6-X

This tough, self-cleaning vacuum is designed for use with all Hilti dust reduction systems and comes with the industry's best tool warranty.

[Watch video](#)



Injectable mortar HIT-HY 200

The most load-affecting and time-consuming step in the installation process is cleaning the hole before injecting adhesive. Now you can install adhesive anchors more quickly and reliably using SafeSet™ Technology, which includes Hilti hollow drill bits, vacuum cleaners, HIT-HY 200 and the HIT-Z anchor rod. It is available in two versions with the same load performance: HIT-HY 200-R for "regular" working times and HIT-HY 200-A for "accelerated" working times.

[Watch video](#)



we want to hear from you



Tool warranty. Some limitations apply. Contact Hilti for details.

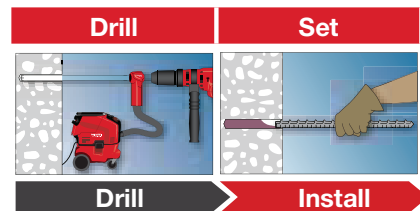


ADHESIVE ANCHOR SYSTEMS

Concrete and Foundations

DUST CONTROL

The Hilti TE-CD/ TE-YD hollow drill bits together with a VC 150 and VC 300 series vacuum cleaners is a specified exposure control method per OSHA's silica standard (OSHA 1926.1153), when used with a drill equipped with a dust collection shroud. Because no separate hole cleaning is needed, a HEPA filter is not required for the hollow drill bit system.



Note: OSHA 1926.1153 Table 1-compliant control methods require a vacuum cleaner with 99% filter efficiency and a filter cleaning mechanism — HEPA not required.

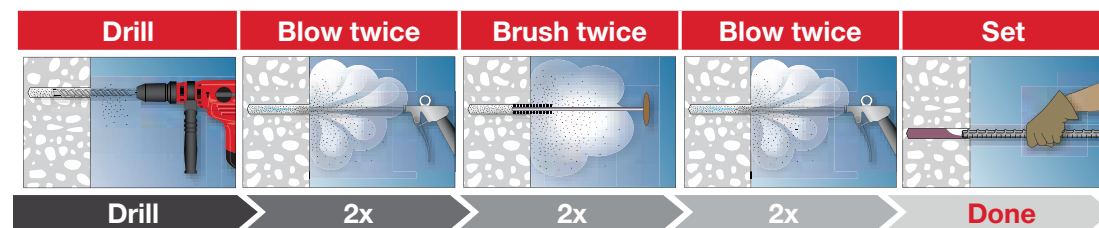
HOLES THAT CLEAN THEMSELVES

Hilti TE-CD and TE-YD Hollow drill bits, in conjunction with the Hilti VC 150 and VC 300 series vacuum and HIT-HY 200, HIT-RE 500 V3, HIT-HY 270, HIT-HY 100, and HIT-RE 100 adhesives make subsequent hole cleaning completely unnecessary. Dust is removed by the Hilti VC 150 or VC 300 series vacuum system while drilling is in progress which leads to faster drilling and a virtually dustless working environment.

THE TRADITIONAL METHOD: BLOW AND BRUSH

All Hilti adhesive anchors can be cleaned with the traditional blow-brush-blow method.

Note: OSHA 1926.1153 requires a HEPA rated vacuum filter with this procedure.



	Fast cure portfolio			Slow cure portfolio		Masonry
	HIT-HY 200	HIT-HY 100	HIT-HY 10 Plus	HIT-RE 500 V3	HIT-RE 100	HIT-HY 270
Performance	Best	Better	Good	Best	Better	Best
Productivity	Best	Best	Better	Best	Best	Best
Reliability	Best	Best	Best	Best	Best	Best
Cost	Good	Better	Best	Good	Better	Good

Proven performance

ICC-ESR / IAPMO approval	ESR-3187, ESR-3963	ESR-3574 (IAPMO Pending)	N/A	ESR-3814	ESR-3829	ESR-2682, ESR 4143 (pending), ESR 4144 (pending), ESR-3342
Base material	Uncracked concrete, cracked concrete, solid masonry	Uncracked concrete, cracked concrete, solid masonry (IAPMO pending)	Concrete, masonry	Uncracked concrete, cracked concrete	Uncracked concrete, cracked concrete	All masonry
Recommended application	Anchor and rebar	Everyday anchor and rebar	Uncracked concrete, solid masonry, hollow masonry	Anchor and rebar	Everyday anchor and rebar	All anchoring and rebar in masonry
Work time at 72°F	HY-200-A: 7 min HY 200-R: 15 min	8 min	5 min	25 min	30 min	4 min
Cure time at 72°F	HY-200-A: 30 min HY 200-R: 60 min	60 min	45 min	6.5 hours	12 hours	30 min
Drilling method	SAFE-ET	SAFE-ET		SAFE-ET	SAFE-ET	SAFE-ET

* diamond coring is an approved drilling method when used with the HIT-Z rod.



we want to hear from you



Some limitations apply. Contact Hilti for details.



CONCRETE POUR AND FINISH

Concrete and
Foundations

When productivity is a priority, the DG 150 diamond grinding system helps you get the job done.



DIAMOND GRINDER DG 150

The DG 150 diamond grinder is equipped with a brushless motor for up to 10 times longer life than conventional grinders. With an optional dust removal system, it delivers the highest productivity and best user experience.



Rotating laser PR 2-HS A12

Experience reliable performance in tough jobsite environments with easy, one button, one function control. This rotator provides simple dependability when you need it most.

[Watch video](#)



Breaker TE 500-AVR with dust removal system TE-DRS-B

This powerful and lightweight breaker easily handles concrete clean up and rework. The TE 500-AVR comes equipped with Active Vibration Reduction (AVR) to reduce operator fatigue and increase productivity.

[Watch video](#)



Universal vacuum cleaner VC 150 10-XE

This tough, self-cleaning vacuum is designed for use with all Hilti dust reduction systems and comes with the industry's best tool warranty.



Angle grinder AG 500-12D 5" and grinding hood for angle grinder DG-EX 125/5

Powerful enough for the most demanding cutting and grinding jobs, our AG 500 comes equipped with Smart Power™ to maintain a constant grinding speed for increased productivity and Active Torque Control for additional operator safety..



Diamond cup wheels

We offer a full spectrum of diamond cup wheels to meet your specific needs and budget.



we want to hear from you



Tool warranty.
Some limitations apply.
Contact Hilti for details.



TUCKPOINTING / Masonry

We've engineered these tools to make tuckpointing easier for you, with dependable features like Active Torque Control (ATC) and an optional dust control system.



ANGLE GRINDER 500-12D

Powerful enough for the most demanding cutting and grinding jobs, our AG 500-12D comes equipped with Smart Power™ to maintain a constant grinding speed for increased productivity and Active Torque Control for additional operator safety.



Dust extraction hood DC-EX

The DC-EX dust extraction hood significantly reduces dust when used with the VC 150 10-XE and AG 500-12D. It provides enhanced operator safety and minimal dust cleanup.



Cordless combihammer TE 30-A36

Experience game changing power, speed and mobility with the best-in-class cordless combihammer. The TE 30-A36 is compatible with new Hilti batteries. Built-in Active Torque Control and Active Vibration Reduction systems provide additional operator safety and comfort.

[Watch video](#)



Joint chisel TE-Y FGM

The TE-Y FGM joint chisel is used for fast mortar removal between bricks in hard to reach areas.

SPX



SP



Tuck point blades SPX / SP

The SPX and SP diamond tuckpointing blades have a high cutting speed and long life for removing mortar joints.



Universal vacuum cleaner VC 150 10-XE

This tough, self-cleaning vacuum is designed for use with all Hilti dust reduction systems and comes with the industry's best tool warranty.



we want to hear from you



Tool warranty. Some limitations apply. Contact Hilti for details.



MASONRY FASTENINGS

Masonry

We offer a full lineup of adhesive anchoring solutions for every application. When you're anchoring in masonry, we have the tools you need.



INJECTABLE MORTAR HIT-HY 270
HIT-HY 270 is the industry standard for hollow block and solid masonry applications. It is suitable for seismic upgrades and renovations of unreinforced masonry buildings.



Universal vacuum cleaner VC 150 10-XE

This tough, self-cleaning vacuum is designed for use with all Hilti dust reduction systems and comes with the industry's best tool warranty.



Dust removal system TE DRS-Y

Our optional dust removal system removes virtually all drilling dust for a safer and cleaner working environment.

NEW



SDS-max rotary hammer TE 60-ATC/AVR

The new TE 60 features a detachable cord which reduces time and cost by allowing you to replace the cord on the jobsite. The TE 60 includes Active Vibration Reduction (AVR) to improve operator comfort and Active Torque Control (ATC) to help protect the user from tool kickback when the drill bit gets stuck. The TE 60 is the first Hilti SDS-max combihammer to feature the Hilti Connect app. Use any NFC-enabled device to see a comprehensive tool history or quickly send in a repair request.



Cordless combihammer TE 30-A36

Experience game changing power, speed and mobility with the best-in-class cordless combihammer. The TE 30-A36 is compatible with new Hilti batteries. Built-in Active Torque Control and Active Vibration Reduction systems provide additional operator safety and comfort.

[Watch video](#)



Mechanical anchors selector chart

Choosing the correct mechanical anchor for your application is critical. To help you understand your options and choose the best combination of products, our team of engineers developed a multi level selector chart. Click the icon above to view and download the chart.

[View Our Anchor Selector](#)



we want to hear from you



Tool warranty. Some limitations apply. Contact Hilti for details.



MASONRY CUTTING

Masonry



Our new, more powerful DSH-X gas saws deliver when you need them most. With rugged reliability, they are easy to start and easy to maintain.



DIAMOND CUTTER DCH 300

The DCH 300 is a powerful electric diamond cutter capable of cutting up to 4 3/4". It's perfect for cutting concrete, granite, slabs, brick and masonry block in addition to metal beams, steel pipes and reinforcing bars. This diamond cutter generates significantly less dust when used with our dust control system.



Universal vacuum cleaner VC 300-17 X

Universal wet and dry vacuum cleaner with automatic filter cleaning and 300 cfm – tank capacity 17 gallons.



Hand-held gas saw DSH 700-X

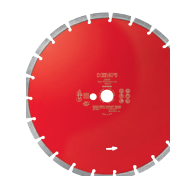
DSH-X gas saws are equipped with a unique automatic choke system for less flooding and easier starting. These saws are easy to maintain with simple starter rope replacements and more efficient air cleaning technology designed to keep your Hilti saw running longer so you can get your job done faster.

[Watch video](#)



Integrated water pump DSH-P

How do contractors comply with dust regulations when water is hard to access? What happens when you do not have access to pressurized water? We've provided an answer to those questions. Introducing the ONLY integrated water pump system designed to attach to your DSH 700X and 900X to ensure that, no matter where you are on a jobsite, dust is under control.



Equidist diamond cutting discs EQD SPX

Experience better cutting speed and blade life with our diamond cutting blade portfolio perfectly matched to your performance and budget needs.

[Watch video](#)



Cordless angle grinder AG 500-A22

The cordless AG 500-A22 is your ideal tool for cutting rebar flush and other metal cutoff applications. Like the rest of our angle grinders, the AG 500 has significantly reduced dust exposure when used with our compatible dust removal systems.



we want to hear from you



Tool warranty. Some limitations apply. Contact Hilti for details.



CUTTING AND CORING

Demolition

You deserve a saw you can trust. When dependability counts, our DSH 700-X gas saws provide power and productivity to get the job done.



HAND-HELD GAS SAW DSH 700-X WITH DSH-P SELF PRIMING WATER PUMP

DSH-X gas saws are equipped with a unique automatic choke system for less flooding and easier starting. These saws are easy to maintain with simple starter rope replacements and more efficient air cleaning technology designed to keep your Hilti saw running longer so you can get your job done faster.

[Watch video](#)



Diamond coring tool DD 250

The DD 250 features a heavy-duty drive unit with four-speed gearing and convenient controls. Enhanced, real-time communication makes this tool more user friendly than ever. The hole-starting function for large-sized core bits provides unmatched versatility for an extremely wide range of applications.

[Watch video](#)



NEW

Core Bit Portfolio P, SP, SPX

Ultimate diamond core bits for drilling in all types of concrete and masonry base materials. Our new range of diamond core bits are the most robust, comprehensive and of the highest quality we've ever made. Hear what our customers say about it.

NEW

Water management system DD-WMS 100

Make coring easy. With the DD-WMS 100 you can spend less time managing water supply, slurry and dust removal saving you hours of unproductive time. Water is recycled up to 7 times providing water autonomy (30 gallons) up to an entire day. During coring, slurry is captured in the filter bag making slurry disposal very easy. The WMS 100 sets the new standard in diamond coring. You no longer have to worry about slurry today or silica dust tomorrow when using the WMS 100.



Cordless/Corded orbital reciprocating saws WSR 22-A/ WSR 1400-PE

With a full range of corded and cordless reciprocating saws, we have the right tool for your toughest cutting and demolition jobs. The WSR 1400-PE provides maximum power and is built to withstand heavy use. The battery-powered WSR 22-A delivers more cuts on one charge and is backed with unlimited battery replacement for up to two years.



Reciprocating saw blades

Our reciprocating blades deliver the smoothest and fastest cutting in the industry. They are available for cutting a wide range of materials from metal, wood and plastics and are perfectly suited for heavy demolition work.

[Watch video](#)



we want to hear from you



Tool warranty. Some limitations apply. Contact Hilti for details.



BREAKING / Demolition

To help select the right tool, it's important to ask yourself the following questions:

- What zone will I be working in most of the time?
- What base materials will I be primarily working with?
- What percentage of time will I be working with each material?
- What is the material thickness?
- Will I mainly be working on surface preparation or breaking?



Breaker TE 1000-AVR

The TE 1000-AVR is packed with features to provide top performance and productivity. The inline design allows for use on both walls and floors. The TE 1000-AVR also features a brushless SR motor and detachable cord to allow for a longer lifetime. Electronics in the tool provides consistent performance, whether you're working on a wall outlet or off a 100' extension cord.



NEW

Breaker TE 2000-AVR

Hilti's newest member of the breaker portfolio is the TE 2000-AVR. At 33 pounds, the TE 2000-AVR is light and maneuverable while delivering reliable demolition performance in floor slabs up to 8" in depth. Like the TE 1000-AVR, the TE 2000-AVR features a brushless SR motor and detachable cord to extend the tool's life-time. It also features electronics to enable consistent performance in multiple power supply scenarios.



Breaker TE 3000-AVR

The TE 3000-AVR doesn't shy away from heavy breaking applications. At 66 pounds, the TE 3000-AVR is the hardest hitting member of the Hilti breaker family. Besides its best-in-class performance, the TE 3000-AVR features a detachable cord and brushless SR motor for a long lifetime, and also features built-in electronics that enable consistent performance in multiple power supply scenarios.

[Learn more about our dust removal systems](#)



Breaker TE 500-AVR

The lightest breaker in the Hilti portfolio, the TE 500-AVR is the preferred solution when mobility is the primary concern. At 12.6 pounds, this tool was built to be used at or above shoulder level for lighter breaking applications.



Breaker TE 700-AVR

A unique blend of power and performance, the TE 700-AVR is a versatile tool that can handle a wide variety of applications, from wall demolition to window and door openings to tile removal. Its weight allows for easy use at any level.



Breaker TE 800-AVR

The TE 800-AVR is the answer to all of your wall breaking needs. At 15 pounds, the TE 800-AVR is our top-performing wall breaker, and can also be used for light floor demolition applications.

SELECTING THE RIGHT TOOL FOR YOUR WORK ZONE

Using the right tool for your application helps increase productivity, extend tool life and improve overall operator comfort and safety.

Dust removal system TE-DRS-B can be paired with the TE 800-AVR, TE 500-AVR, TE 700-AVR and the TE 70-ATC/AVR for a safer and cleaner drilling experience.

Dust removal system TE-DRS-3000 is for dust control indoor chiseling/ breaking with the TE 3000-AVR.



we want to hear from you



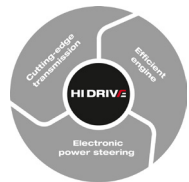


COMBIHAMMERS AND BREAKERS

Demolition



Take a look below at the innovations and support that Hilti builds into its breaker portfolio. These features help boost productivity and worker safety.



HiDrive

This technology is present on the TE 800-AVR, TE 1000-AVR, TE 2000-AVR, and TE 3000-AVR. Electronics within the tool manage performance to ensure optimum performance in various power supply situations.



ATC (Active Torque Control)

Hilti's ATC system provides additional protection in the event the accessory binds.



AVR (Active Vibration Reduction)

This feature is offered standard on every Hilti breaker. AVR is a blend of features within the tool to help reduce vibration felt by the user. Reducing vibration helps keep workers working longer, therefore providing a boost in productivity while also allowing for increased worker comfort. Look for the AVR logo on Hilti tools to confirm its presence.



Detachable cord

Currently offered on the TE 50, TE 60, TE 1000-AVR, TE 2000-AVR, and TE 3000-AVR, the detachable cord allows for longer run time in between repairs. This feature will keep the tools up and running, rather than having them waste away in the repair center. Standard tool packages will come with 2 cords.



Hilti Connect

Offered as a standard feature on new Hilti breakers, look for the Hilti connect logo on the rating plate or NFC tags. Downloading the free Hilti Connect app can allow users to scan a tag with a NFC-enabled device, or look up the tool's serial number, in order to get a comprehensive tool history. The app also allows users to request repair labels or jump to Hilti Online to learn more about the tool and its accessories.



OSHA 1926.1153 silica standards

Hilti breakers are table 1 compliant with the new silica standards when used with a shroud and a Hilti vacuum:

DRS-B: shroud for TE 500-AVR up to TE 2000-AVR

DRS 3000: shroud for TE 3000



Hilti tool warranty

20 years: Hilti will repair or replace parts that break as a result of defects in materials or workmanship for 20 years.

2 years: Hilti will repair tools at no cost for 2 years from the date of purchase. Damage due to wear and tear is covered. No charges for parts, labor, or even shipping.

1 day: If Hilti does not repair a tool the same day it is received in a Tool Service Center then the repair is free - including parts, labor and shipping.

Some limitations apply. Contact Hilti for details.



we want to hear from you





DUST CONTROL PRODUCTS AND SOLUTIONS

Clearing the air on the new OSHA respirable crystalline silica dust regulation

Here at Hilti, we are committed to helping you reduce dust exposure and increase your productivity on site with products and services designed to greatly reduce exposure to dust. It's time to take advantage of all the benefits of Hilti dust control systems.

We have designed resources and solutions to help professionals just like you in the construction industry better understand and comply with the new OSHA 1926.1153 regulations for silica dust exposure.



THERE ARE THREE WAYS TO COMPLY WITH OSHA SILICA DUST REGULATIONS

Click the icons below to download each resource



OSHA Table 1

Choose a pre-determined option based on your application, from OSHA Table 1 — Exposure Control Methods for Silica Dust.



Objective Data or Performance Testing

Utilize third-party performance or objective data to document that workers performing a particular application are in compliance with the permissible exposure limit of $\leq 50 \mu\text{g}/\text{m}^3$ average over an eight hour day.



Scheduled Air Monitoring

Periodically test for a particular application to validate if the user falls under the permissible exposure limit of $\leq 50 \mu\text{g}/\text{m}^3$.

[Click to watch an informational OSHA silica dust webinar](#)



Hilti dust control products and solutions

[Learn more about Hilti dust control products and solutions for your application](#)

LIFT CERTIFICATIONS
ASBESTOS TRAINING POWDER TOOL CERTIFICATIONS
OSHA CERTIFICATIONS
FALL PROTECTION CPR & FIRST AID
HAZMAT LEAD CERTIFICATION
CRANE OPERATION
DRIVERS LICENSES



Manage employee certifications and trainings

Navigating the new OSHA silica dust regulation (1926.1153) goes beyond understanding the rules and having the proper equipment.

[Click to learn more](#)



OSHA Silica Dust Resources:

[Hilti Product Selector Guide](#)

[Hilti White Paper OSHA rule on silica dust](#)



TOOL FLEET MANAGEMENT

Control your tools and your costs

We understand that managing an entire tool portfolio is a massive undertaking. With Tool Fleet Management, you can eliminate many of the headaches and up-front expenses associated with tooling up. We'll provide the tracking, coverage, and upgrades that keep your tools—and your team—running at peak performance.



WHAT IS TOOL FLEET MANAGEMENT?

With Tool Fleet Management, you get our newest tools at a fixed monthly rate for a pre-defined period. That means you can focus on your project while we focus on managing your tools.

[Learn more about how Tool Fleet Management works](#)

EXPLORE FLEET MANAGEMENT

From complete transparency and total reliability to reduced overall spending on tools - there is a long list of benefits that come with your Tool Fleet Management plan.

[See all the benefits of Tool Fleet Management](#)

[Hear what our Fleet customers are saying](#)

ADD TOOLS ON DEMAND

Need a tool for a special job or just for a shorter period of time? Put our high-performing tools to work when and where you need them.

[Discover Tools on Demand](#)

DON'T TAKE OUR WORD FOR IT

For years, Tool Fleet Management has been increasing productivity for real people in real situations.

[Hear what our Hilti customers have to say about our Tool Fleet Management](#)

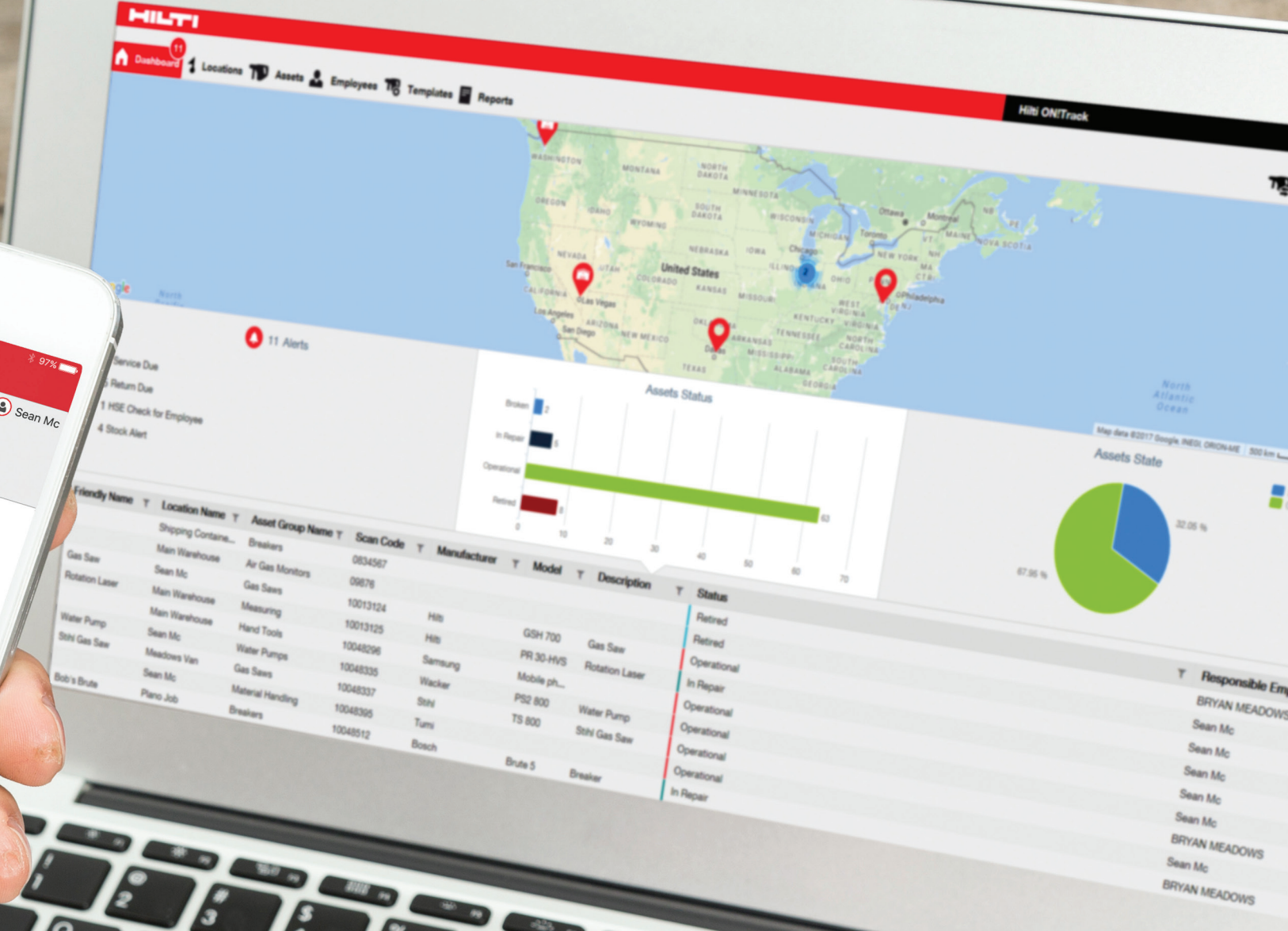
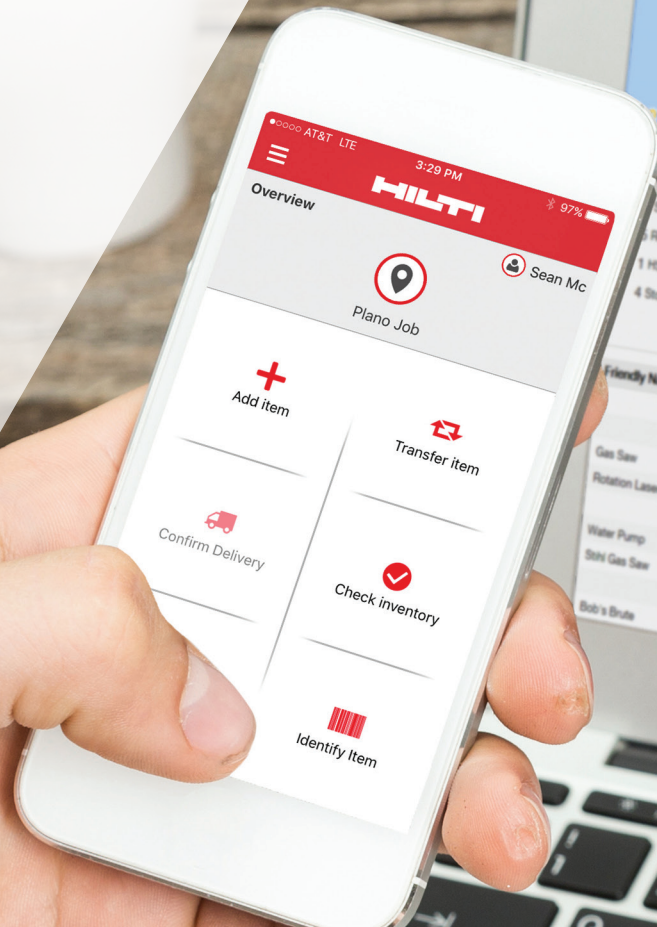




ON!TRACK ASSET MANAGEMENT

With transparency comes efficiency

The biggest jobsite efficiency killers are tool and other assets that are broken or not where they need to be. These problems don't just slow you down, they also cost you money. We can help make it easier to keep track of your tools and other assets with ON!Track Asset Management.



HOW ASSET MANAGEMENT WORKS

Our specially trained team members will visit your work site to learn about your unique needs and design and implement a solution that's tailored for you. We combine the latest technology with jobsite-friendly processes to make sure you can always answer questions like, "Where is that tool?" and "Who was using it last?"

- **Hardware:** Data Matrix (2D Barcode) adhesive, metal plate, and hanger tags.
- **Software:** Cloud-based and free smartphone app (iOS and Android). With unlimited users.
- **Service:** Onsite consultation, asset tagging, onsite training, data upload, complete with best in class customer support.



WHAT IT TRACKS

ON!Track is designed to manage all of your assets, regardless of brand or manufacturer, and can track more than just tools.



Inventory min/max for consumables



Service maintenance schedules



Rental equipment return dates



Employee trainings & certifications



Track safety equipment



Track commodities



Jobsite cost allocation

WHAT ON!TRACK CUSTOMERS ARE SAYING

“ We had tried another scan tracking system and it was a miserable failure because they sold us an absent implementation and only offered support on the internet and phone. Hilti showed us a great implementation by coming out and training and implementing the program with us. (very important service if you don't already know) ”

— Mike Moore, President
ADEP GROUP



CONTACT OUR ON!TRACK PROS

Our friendly and expert U.S. based customer service team is ready to help. Phone: 1-866-879-4578 | Email: hnaontrack@hilti.com

we want to hear from you



TOOL WARRANTY

Warranty redefined.



Materials and workmanship warranty

- We stand behind our work. If something breaks as a result of defects in materials or workmanship, we will replace it within 20 years of purchase.



Wear and tear coverage

- We will repair worn or damaged tools at no cost for 2 years from the date of purchase.
- During this timeframe, you won't be charged for parts, labor, or even shipping.



One day guaranteed, or the repair is free

- We will repair your tool the same day we receive it in our repair center. And if we don't, then the repair is totally free — including parts, labor, and shipping.

REPAIR MADE SIMPLE

One click or a call does it all

Visit Hilti Online or call Customer Service for more information:

www.hilti.com 1-800-879-8000 (U.S.) | www.hilti.ca 1-800-363-4458 (Canada)

1 Some exceptions apply; grinders, SD 4500, SD 2500, gas saws, WSR corded tools and UD and UH tools do not have wear and tear coverage. Wall saw head, remote control, and E box and wire saw power unit and control box have two year wear and tear coverage or 200 hours of usage, whichever comes first. No other components, accessories, or consumables are included.

2 Wear and tear coverage excludes damage due to abuse, or use not in accordance with the tool operator's manual. The following consumable items are excluded from wear and tear coverage and repair or replacement of those items shall be at customer's expense: pistons, buffers, and spring clips for powder actuated tools, pull cord assemblies and filters for gas saws and filters for vacuums.

20-2-1 warranty applies to tools only.

3 One day repair turnaround time starts when the tool is received at the Tool Service Center (TSC). A repair is only eligible for one day turnaround guarantee if customer approves Repair Cost Limit (RCL) in advance; repairs with authorizations for less than the full RCL and repairs requiring quotes are not eligible. Limit of 5 tools per company per day per TSC. Tools must be received at TSC via UPS or Purolator. Any delay in credit card authorization voids the 1 day-or-free guarantee. Excluded tools include: total stations, optical devices, detection tools, wall saws, wire saws, and HAT 28. Excludes delays caused by force majeure events (e.g. hurricanes). Extended no cost warranty does not apply to no-charge repairs.



we want to hear from you

we want to hear from you



HILTI CONNECT

Hassle-free tool services at your fingertips.

Dealing with tool repairs on a jobsite is a hassle, and finding answers to the questions you have is never easy. Is this tool under warranty? How many times has it been repaired? How much money has been spent on this tool? Should it be repaired or replaced? Hilti Connect can help you answer all those questions.

[See all the benefits of Hilti Connect](#)

[Hear about how easy it is to use the Hilti Connect](#)



WHAT IS HILTI CONNECT?

Hilti Connect is a new phone app that allows you to identify your tool with NFC technology, find detailed tool information such as warranty and fleet expiration dates, and see how many times a tool has been repaired. The app also allows you to submit your tools for repair right from your smartphone.

HOW DO I KNOW IF MY TOOL IS NFC ENABLED?

Any Hilti tool that is NFC enabled will have a "Connected" symbol on the rating plate of the tool. Place your phone in that location and it will read the NFC tag and take you to the Hilti Connect App.

HOW DOES IT WORK?

There are three things make up the whole Hilti Connect experience. The app, the NFC tag, and the Hilti Cloud. Once logged into the app with your Hilti Online login credentials, you can search for the tool you want by serial number or by scanning the NFC tag. After scanning a tool, the app links to the Hilti Cloud and pulls in all the data and documents for that tool.

WHAT ELSE CAN I DO WITH HILTI CONNECT?

Hilti Connect gives you access to operators manuals, OSHA silica dust documents, how to videos and instructions. It shows you related products when you are looking for a replacement blade, bit, or chisel. Hilti Connect also connects via Blue-tooth to some of our powder and battery actuated tools to display usage information such as how many shots you have done, and when it needs to be sent in for repair or maintenance, as well as the last seen location.

Hilti Connect can be downloaded for free from the Google Play store, or the App Store right to your smart phone.





PROJECT MANAGEMENT OFFICE

Custom solutions to help you finish on time and under budget

From design to execution, our Project Management Office is here to make your job easier with a unique mix of services including structural design calculations, AutoCAD® details, Professional Engineer (PE) stamping, cutting, kitting, and preassembly. No matter how complex your project is, our cross-functional team of engineers, bid and proposal managers, and logistics experts are here to help.



MAXIMUM EFFICIENCY Tight timeline? Count on us.

We measure and cut

- We'll ship your pre-measured and pre-cut materials direct to your job site for immediate installation, reducing your labor and scrap costs, and eliminating cutting-related injuries.

We kit

- Kits are packaged with all components needed for assembly.
- Minimize freight costs with conveniently boxed kits that can be easily transported to any location.

We assemble

- Pre-assembled materials arrive ready for immediate installation.
- Save assembly time and on-site storage space, decrease inventory management costs, and shorten your construction schedule.

ENGINEERING EXPERTISE Software and support to tackle any job

Structural engineering

- PROFIS design and calculation software
- Signed and sealed drawings from Hilti-accredited structural engineers

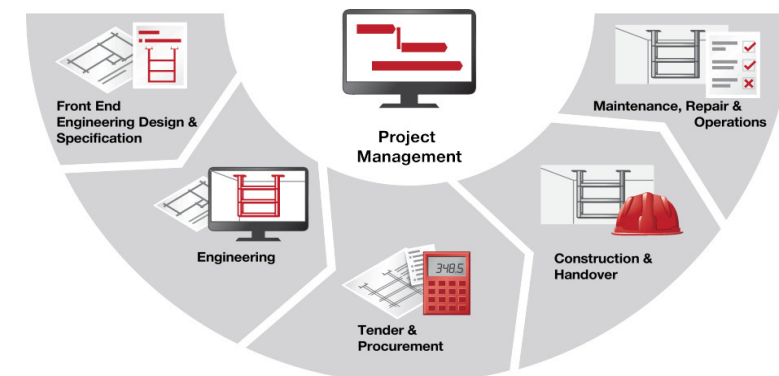
Plant design modeling

- Libraries for the main 3-D plant design software (Aveva PDMS™, Intergraph SmartPlant™)

Detail and shop drawings

- Library of components for common AutoCAD systems

[Get more information about the complete lineup of services provided by the Hilti Project Management Office](#)



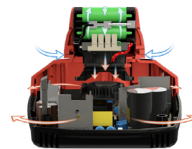
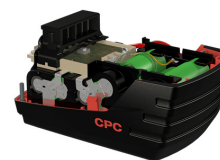
we want to hear from you



CORDLESS IN CHARGE

Solutions for every jobsite

Advanced cordless technology helping drive your business. Featuring intelligent power management systems and delivering maximum performance, our cordless tools are the professionals' choice for any job. Our batteries are the toughest out there, so when you're ready to work, your tools are ready to work too.



APPLICATION SOLUTIONS

No matter what kind of projects you work on or which trades you specialize in, Hilti has the cordless platform to help you get the job done.

- Drilling
- Screw Fastening
- Bolting and Anchoring
- Cutting
- Direct Fastening
- Grinding
- Hammer Drilling and Chipping

[Click to learn more about cordless tool application solutions](#)

CORDLESS TECHNOLOGY

Our batteries provide the power to outperform under the toughest jobsite conditions. These lightweight, lithium-ion batteries charge quickly and hold a charge longer, so you can be sure that your tools are ready to work when you are.

[Click to learn more about our Lithium-Ion battery technology](#)

INNOVATION

Cordless rotary hammer TE 6-A36

The TE 6-A36 is the latest in a long line of advances in rotary technology. Hilti's unwavering commitment to innovation is rooted in our understanding of what it takes to get the job done. The TE 6-A36 has a brushless drive providing outstanding power to weight ratio.

[Learn more about the innovations of the TE 6-A36](#)

BEYOND THE TOOL

Reduce costs: With our fast and free repairs this premium service comes without a premium price tag. We have easy service access with no receipts necessary and offer the lowest cost of ownership.

Increase productivity: Our team of experts are always ready to help work through an issue, offer application advice, or demo a product for your team.

Maximize transparency: When you need support know exactly how to access it quickly and who to contact. Looking for a better way to get the job done? We're here to help.

[Learn more about cordless services](#)



SOFTWARE SOLUTIONS

Faster and more efficient

From digital to desktop to mobile app—with only a few clicks—you can quickly and easily calculate, design, or document an accurate solution. It means you can get a better solution in a fraction of the time.



3-D DESIGN PLUG-IN

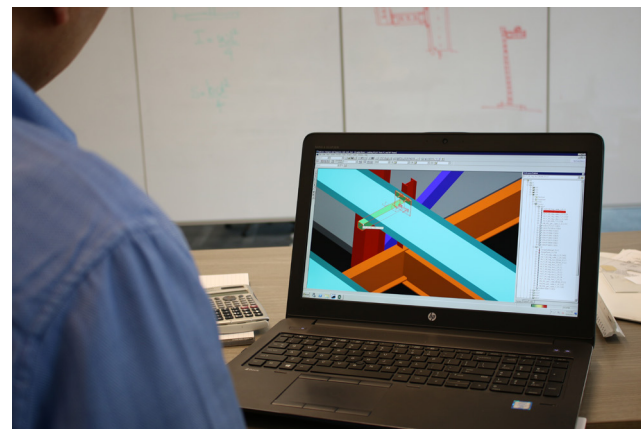
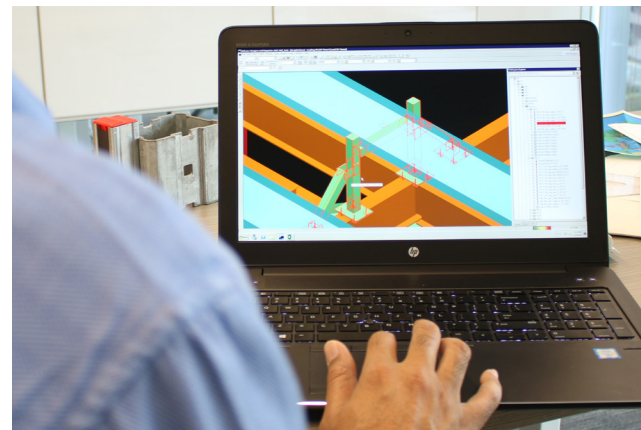
Simple, easy to use and accurate

- **Hilti Modular Supports Plug-in for Smart Plant 3D**

Design and planning tool for piping, cable tray and HVAC duct supports used in chemical, power, mining, oil, and gas construction projects. The plug-in reports Hilti Modular Supports in material takeoffs, bill of materials generation and allows for cash detection, minimizing risks and changes on the job site.

[Download Hilti Modular Supports Plug-in for Smart Plant 3D](#)

[Download PROFIS software](#)



PROFIS DESIGN SOFTWARE SUITE

Simple, easy to use and accurate

- **PROFIS Anchor** A downloadable software solution that lets you perform anchor design with Hilti's post installed mechanical or adhesive anchors, as well as generic cast in place anchors in accordance with the latest North American model building codes.
- **PROFIS Anchor Channel** Provides the best features to quickly model and design embeds for a variety of geometries, base material and loading conditions. It is the industry leader in anchor channel design providing the user a simple and intuitive way to apply design consideration capabilities for seismic scenarios.
- **PROFIS Rebar** A simple online tool that enables Engineers and Designers to model post installed reinforcing bar equivalent to cast in place reinforcing bar.
- **PROFIS DF Diaphragm** Simplifies steel roof deck and floor deck design while giving designers and specifiers performance and optimum cost efficiency. The downloadable software lets you design and calculate diaphragm strength, flexibility and resistance using puddle welds, Hilti powder-actuated fasteners and screw fasteners in a simple and intuitive way.
- **PROFIS Installation** A unique software innovation for support structures with Hilti's innovative modular systems focusing on industrial and light applications. You can design and get structural analysis of supports and 3D structures built using Hilti installation systems plus a selection of the appropriate Hilti products.



Hilti, Inc. (US)
Legacy Tower, Suite 1000
7250 Dallas Parkway | Plano, TX 75024
www.facebook.com/HiltiNorthAmerica
www.hilti.com
Customer Service: 1-800-879-8000



Hilti (Canada) Corporation
2360 Meadowpine Blvd.
Mississauga, Ontario, L5N 6S2
www.facebook.com/HiltiNorthAmerica
www.hilti.ca
Customer Service: 1-800-363-4458