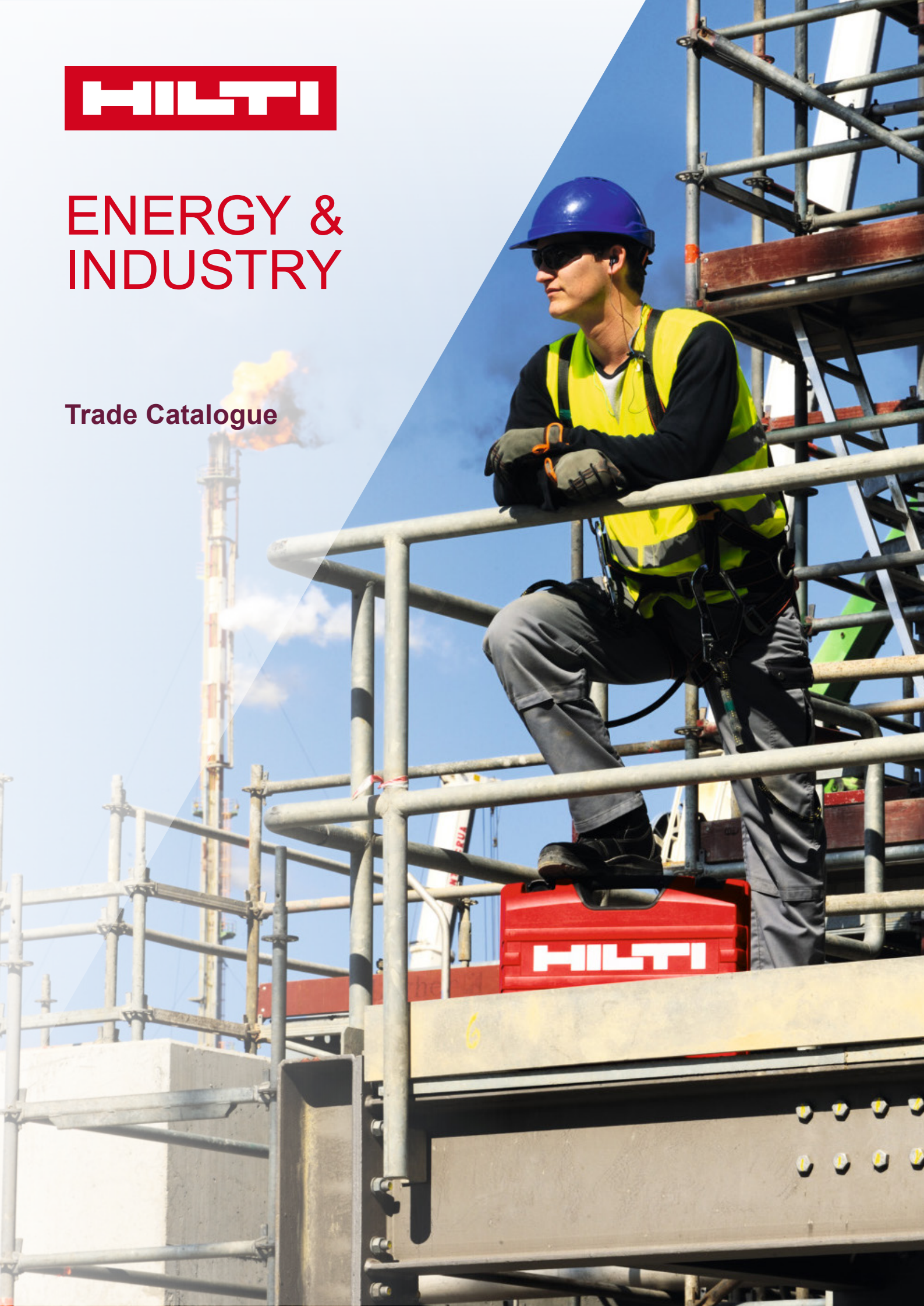




# ENERGY & INDUSTRY

Trade Catalogue



# TABLE OF CONTENTS

## PRODUCTS

EQUIPMENT & STRUCTURAL ANCHORING 04

GRATING & MULTIPURPOSE FASTENING 06

PIPING, ELECTRICAL, & INSTRUMENTATION SUPPORTS 08

DEMOLITION & DIAMOND CUTTING TOOLS 10

METAL GRINDING & CUTTING 12

FIRE PROTECTION SOLUTIONS 14

## SERVICES

ON!TRACK ASSET MANAGEMENT 16

HILTI TOOL WARRANTY 18

SOFTWARE SOLUTIONS & SERVICES 20





# ABOUT HILTI

## Energy & Industry

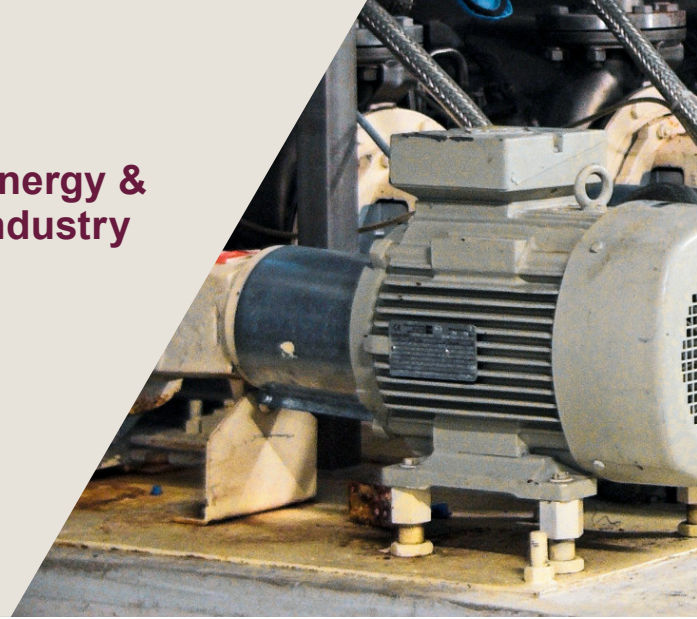
At Hilti, we make and design leading cutting-edge technology, software, and services, empowering the professional construction industry. With a global presence in over 120 countries and more than 23,000 employees, we offer a 360 degrees service for your build – from software for design, products, and tools for work onsite to training, repairs, testing, and consultancy. We create technologies, software, and services, which are aimed to drive innovation and stand out from the competition. Our technologies are known to support the achievement of many admirable feats in the field of engineering across the world.

Our commitment to our customers is the epitome, and that is why two-thirds of our Hilti team members are focused on working directly with our customers every day. With our one-of-a-kind services, the industry's best warranty, and specialists in areas like structural engineering and fire protection, we have become a brand to be reckoned with among energy & industry professionals.

# EQUIPMENT & STRUCTURAL ANCHORING

Energy & Industry

Meet all your special requirements of fixing dynamic load machines or critical structures with the complete Hilti anchor portfolio with a range of approvals combined with a design engineered to ensure safety.



## HDA ANCHORS FOR ALL DYNAMIC LOADS

- Self-undercut HDA anchors are the answer to the most critical fixings.
- These include dynamic/fatigue loads of machines, shock or impact loads, or seismic loads.
- The unique self-undercut ensures anchor safety even in the most unfavorable conditions.

[More Info](#) →

[Watch Now](#) ▷



## RE 500V3 CHEMICAL ANCHORING

- The new generation epoxy chemical ideal for fixing anchors of high diameter/ embedment and in core cut holes.
- The slow initial setting time allows proper fixing in deeper holes in high ambient temperature conditions.

[More Info](#) →

[Watch Now](#) ▷



## SAFE-SET

### HY200 R + HIT-Z

- HY200R chemical used with HIT-Z anchor rods eliminates the risks associated with inadequate hole cleaning.
- Easily handles high loads in cracked concrete and seismic applications (ICC-ES & ETA-C2 approvals).

[More Info](#) →

[Watch Now](#) ▷



**PRODUCTS**

**EQUIPMENT & STRUCTURAL ANCHORING**

GRATING & MULTIPURPOSE FASTENING

PIPING, ELECTRICAL, & INSTRUMENTATION SUPPORTS

DEMOLITION & DIAMOND CUTTING TOOLS

METAL GRINDING & CUTTING

FIRE PROTECTION SOLUTIONS

**SERVICES**

ON!TRACK ASSET MANAGEMENT

HILTI TOOL WARRANTY

SOFTWARE SOLUTIONS & SERVICES



**PS 1000 CONCRETE SCANNER**

- Ideal tool to scan reinforcement presence in dense concrete beyond the first layer.
- The innovative technology eliminates unnecessary concrete damage due to trial & error drilling.

[More Info](#) →

[Watch Now](#) ▶



**COMBI-HAMMERS TE 70-ATC/AVR**

- Drills 40% faster than other combis.
- It also features best-in-class operator safety and comfort with Active Torque Control (ATC) and Active Vibration Reduction (AVR) systems.
- ATC stops the motor almost instantly if the bit gets stuck and causes the housing to begin rotating too quickly.
- Thereby, reduces the potential injury to the operator.

[More Info](#) →

[Watch Now](#) ▶



**DIAMOND CORING MACHINE DD 200**

- High performance in rig based wet coring work on concrete, including drilling penetrations in diameters up to 500 mm.
- The deep hole core bit system is specially designed to give a superior and reliable performance.
- Performs remarkably in challenging deep drilling jobs frequently done for foundation bolt removal.

[More Info](#) →

[Watch Now](#) ▶

# GRATING & MULTIPURPOSE FASTENING

Energy &  
Industry

Fasten gratings, cable trays, junction boxes, or light fixtures with screw fastening technologies that increase installation speed, safety, and convenience compared to traditional methods.



## THREADED SCREW STUD S-BT GR/GF WITH GRATING FASTENER DISCS X-FCM-R/M

- Highly corrosion resistant, equivalent to A4 (316) stainless steel.
- Also available: S-BT GF threaded screw studs for grating and X-FCM-M grating fastener disc with hot-dip galvanized and duplex-coated components which are equivalent to 45 µm hot-dip galvanized.
- Created for a single-operator installation.
- Feature high load and pull-out values that are comparable to stud welding with vibration resistance.
- Fasten to all steel shapes and grades and can easily be removed for maintenance work.

[More Info](#) →

[Watch Now](#) ▶





 **1-800-102- 6400**

 **WRITE TO US**

## PRODUCTS

EQUIPMENT & STRUCTURAL ANCHORING

**GRATING & MULTIPURPOSE FASTENING**

PIPING, ELECTRICAL, & INSTRUMENTATION SUPPORTS

DEMOLITION & DIAMOND CUTTING TOOLS

METAL GRINDING & CUTTING

FIRE PROTECTION SOLUTIONS

## SERVICES

ON!TRACK ASSET MANAGEMENT

HILTI TOOL WARRANTY

SOFTWARE SOLUTIONS & SERVICES



## THREADED SCREW STUD S-BT MR/MF

- Corrosion-resistant threaded studs for multi-purpose fastenings on steel, equivalent to A4 (316) stainless steel.
- Also available in duplex-coated components equivalent to 45 µm hot-dip galvanized.
- The fast and easy one-person installation, battery powered with no propellant required.
- Fasten to all steel shapes and grades, hold relevant approvals for offshore and onshore environments.
- Available in M18 & M10 thread size.

[More Info](#) →

[Watch Now](#) ▶



## DRILLING & FASTENING TOOLS SBT-4 A22

- Just one tool for pilot hole drilling, stud setting, nut setting and grating disc tightening.
- The keyless SBT 4A-22 will set studs into 6 mm of coated base material.
- It has two gears – one for drilling the pilot hole and one for fastening the stud or nut.

[Watch Now](#) ▶



# PIPING, ELECTRICAL, & INSTRUMENTATION SUPPORTS

Energy &  
Industry

Accelerate modifications and adaptations for electrical jobs with innovative connectors that are fast and quick to install and form supports for cable trays, junction boxes, and pipes.



## MQ CHANNELS & CONNECTORS

- 21mm-124mm deep slotted channels (both single & back to back) have serrations for higher loading.
- Innovative push buttons and connectors with compatible slots to reduce the fixing time by over 60%.

[More Info](#) →

[Watch Now](#) ▶



## PIPE RINGS

- Large portfolio of pipe rings those cover diameters ranging 10mm to 400mm.
- Quick release pipe rings are very fast to fix.
- Pipe rings with inlays reduce vibration noise.
- Refrigeration pipe rings are ideal for high/low temperature pipes.

[More Info](#) →



## STUD TYPE EXPANSION ANCHOR HST-3

- Ideal for critical supports- whether suspended type, subject to vibration or for catering to seismic loads.

[More Info](#) →

[Watch Now](#) ▶



## SAFE-SET

### HY200 R + HIT-Z

- HY200R chemical used with HIT-Z anchor rods eliminates the risks associated with inadequate hole cleaning.
- Easily handles high loads in cracked concrete and seismic applications (ICC-ES & ETA-C2 approvals).

[More Info](#) →

[Watch Now](#) ▶





1-800-102- 6400

WRITE TO US

### PRODUCTS

EQUIPMENT & STRUCTURAL ANCHORING

GRATING & MULTIPURPOSE FASTENING

PIPING, ELECTRICAL, & INSTRUMENTATION SUPPORTS

DEMOLITION & DIAMOND CUTTING TOOLS

METAL GRINDING & CUTTING

FIRE PROTECTION SOLUTIONS

### SERVICES

ONITRACK ASSET MANAGEMENT

HILTI TOOL WARRANTY

SOFTWARE SOLUTIONS & SERVICES

## CORDLESS ROTARY HAMMER TE 30-A36



- A revolutionary combihammer for drilling large diameter holes with the speed of corded tools two classes larger while delivering the productivity of a cordless tool.
- No more dragging extension cords around the jobsite.
- Features Active Vibration Reduction and Active Torque Control safety features.

[More Info](#) →

[Watch Now](#) ▶



## CORDLESS IMPACT WRENCH SIW 22-A



- This cordless tool that can be used for tightening anchor and torquing bolts (up to M16 dia).
- The compact and rugged design allows usage in tight spaces.
- Brushless motor allows more work per charge and increases the life of the tool.

[More Info](#) →





# DEMOLITION & DIAMOND CUTTING TOOLS

Energy &  
Industry

Cut effortlessly through concrete foundations as well as steel structures and pipes with diamond wire saw systems. An ideal solution for the decommissioning of offshore platforms, flares, FCC units, chimneys, foundations etc.



## BREAKER TE 1000 AVR AND TE 800 AVR

- The redesigned TE 1000AVR comes with 50% less vibration in its class.
- Optimized for floor and lower wall breaking.
- The detachable supply cord makes exchanging damaged/broken supply cords quick and easy to keep your job moving forward.

[More Info](#) →

[Watch Now](#) ▶





 1-800-102- 6400

 WRITE TO US

## PRODUCTS

EQUIPMENT & STRUCTURAL ANCHORING

GRATING & MULTIPURPOSE FASTENING

PIPING, ELECTRICAL, & INSTRUMENTATION SUPPORTS

## DEMOLITION & DIAMOND CUTTING TOOLS

METAL GRINDING & CUTTING

FIRE PROTECTION SOLUTIONS

## SERVICES

ON!TRACK ASSET MANAGEMENT

HILTI TOOL WARRANTY

SOFTWARE SOLUTIONS & SERVICES



## WIRE SAW DS WS 15/30

- Has up to 22 kW peak power and 15 kW effective continuous power rating with minimum water cooling.
- It is compact, easy to handle and transport with wireless remote control for top productivity, maximum performance, and high reliability.

[More Info](#) →



## WIRE SAW DS WS 10 WITH STEEL CUTTING WIRES

- This fast-cutting tool is easy to set up.
- Particularly suitable for standard activities such as pipe replacements.
- Special diamond wires for steel cutting enhance productivity.

[More Info](#) →





# METAL GRINDING & CUTTING

Energy & Industry

Enhance your jobsite efficiency with Hilti metal cutting and grinding portfolio with enhanced safety features combined with an innovative solution for cold steel cutting in a fire risk environment.

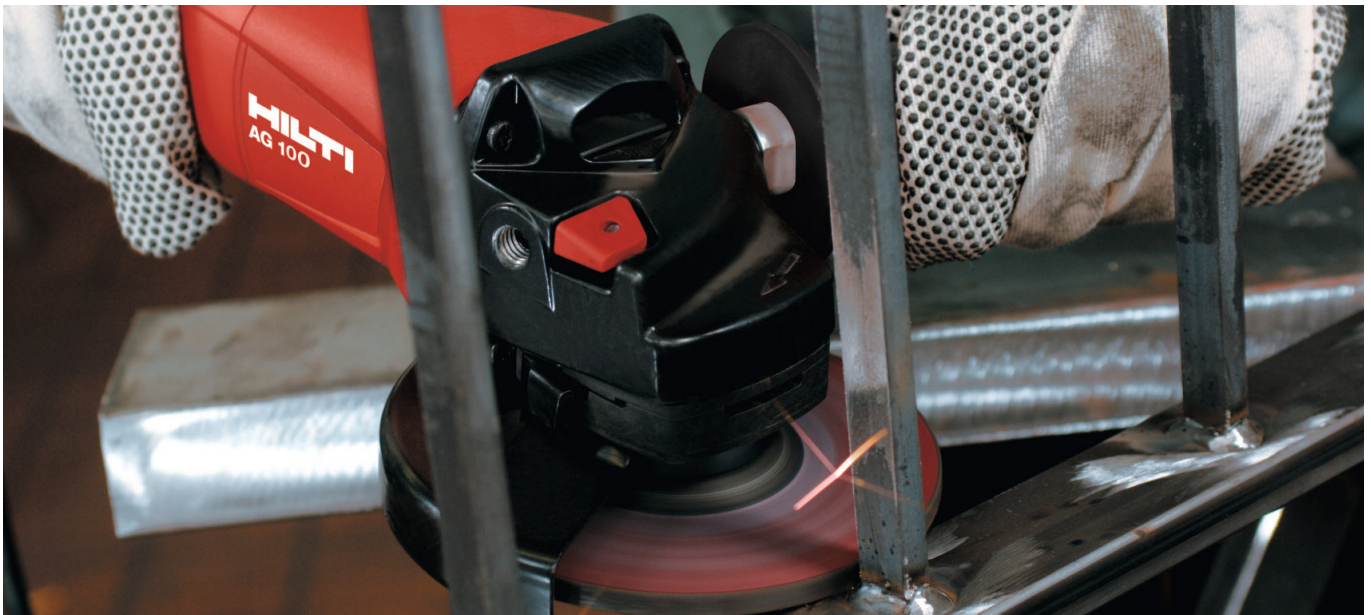


## METAL GRINDER AG 100-8D



- Its robust design outlasts other tools in both life and repair frequency.
- The dead man switch on the tool increases safety on site for the workers.

[More Info](#) →



## CUTTING & GRINDING DISCS

- Hilti offers cutting and grinding discs in sizes 4", 5" and 7".
- The OSA approved discs are designed for optimal life and performance when used on carbon steel.

[More Info](#) →



 **1-800-102- 6400**

 **WRITE TO US**

## PRODUCTS

EQUIPMENT & STRUCTURAL ANCHORING

GRATING & MULTIPURPOSE FASTENING

PIPING, ELECTRICAL, & INSTRUMENTATION SUPPORTS

DEMOLITION & DIAMOND CUTTING TOOLS

## METAL GRINDING & CUTTING

FIRE PROTECTION SOLUTIONS

## SERVICES

ON!TRACK ASSET MANAGEMENT

HILTI TOOL WARRANTY

SOFTWARE SOLUTIONS & SERVICES

## SCM-22A FOR COLD STEEL CUTTING



- This cordless tool is an innovative solution for cutting secondary steel members with negligible sparks and heat generation.
- Highly instrumental in avoiding delays in operational plants where fire risk doesn't allow for cutting with abrasive discs or gas welding.
- Specially designed cutting disc with a distinctive coating that completes the system solution.

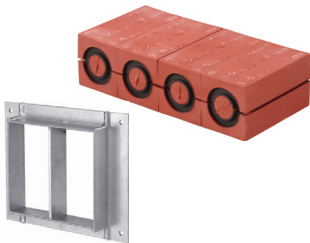
[More Info →](#) [Watch Now ▶](#)



# FIRE PROTECTION SOLUTIONS

Energy & Industry

Fulfill special fire protection needs with the added flexibility of adding or removing cables, water tightness, blast rating with a comprehensive tool portfolio for fire protection systems tested in UL Labs.



## CFS-T CABLE TRANSIT SYSTEM

- Provides unmatched performance in high blast rating requirements, air or water tightness or flexibility of cable changes.
- The innovative multiple-sealing lip inlays provide better sealing as well as higher ease of inspection.
- 30-40% faster on-site fixing through over peel-off system.

[More Info](#) →



## EXPANDING FOAM CP 620

- Expands over 7 times its volume to seal complex and inaccessible openings.

[More Info](#) →

[Watch Now](#) ▶



## FIRE STOP MORTAR CP 636

- A light density mortar solution ideal for the sealing of large openings with cable tray penetrations or vertical shafts which can be exposed to water.

[More Info](#) →



1-800-102- 6400



WRITE TO US

## PRODUCTS

EQUIPMENT & STRUCTURAL ANCHORING

GRATING & MULTIPURPOSE FASTENING

PIPING, ELECTRICAL, & INSTRUMENTATION SUPPORTS

DEMOLITION & DIAMOND CUTTING TOOLS

METAL GRINDING & CUTTING

## FIRE PROTECTION SOLUTIONS

## SERVICES

ONITRACK ASSET MANAGEMENT

HILTI TOOL WARRANTY

SOFTWARE SOLUTIONS & SERVICES



## CP 670 FIRE STOP BOARD COATING

- Highly suitable for sealing openings for bottom entry cables under electrical panels.
- Comes with an extremely flexible coating which dries quickly to form an elastic protective layer.

[More Info](#) →



## CABLE COATING CP 679-A

- Retards fire propagation through cable surface without any derating.
- This UV and water resistant ablative coating can be used in both internal or external environment.

[More Info](#) →





# ON!TRACK ASSET MANAGEMENT

**With transparency comes efficiency!**

**Stay on top of your tools and critical assets.**



## WHAT ON!TRACK CUSTOMERS ARE SAYING



We had tried another scan tracking system and it was a miserable failure because they sold us an absent implementation and only offered support on the Internet and phone. Hilti showed us a great implementation by coming out and training and implementing the program with us. (very important service if you don't already know)



**- Mike Moore,  
President ADEP GROUP**

Some of the biggest jobsite efficiency killers are tools and assets that are broken, misplaced or mismanaged. These problems don't just slow you down, they also cost you money. Our ON!Track Asset Management can help you keep track of your tools and other assets and streamline your business.

## HOW ASSET MANAGEMENT WORKS

Our specially trained team members will visit your worksite to understand your unique needs and design and implement a solution that's tailored just for you. We combine the latest technology with jobsite-friendly processes to make sure that you always know the answers to questions like, "Where is that tool?" and "Who was using it last?"



### HARDWARE

**Smart Tags**



### SOFTWARE

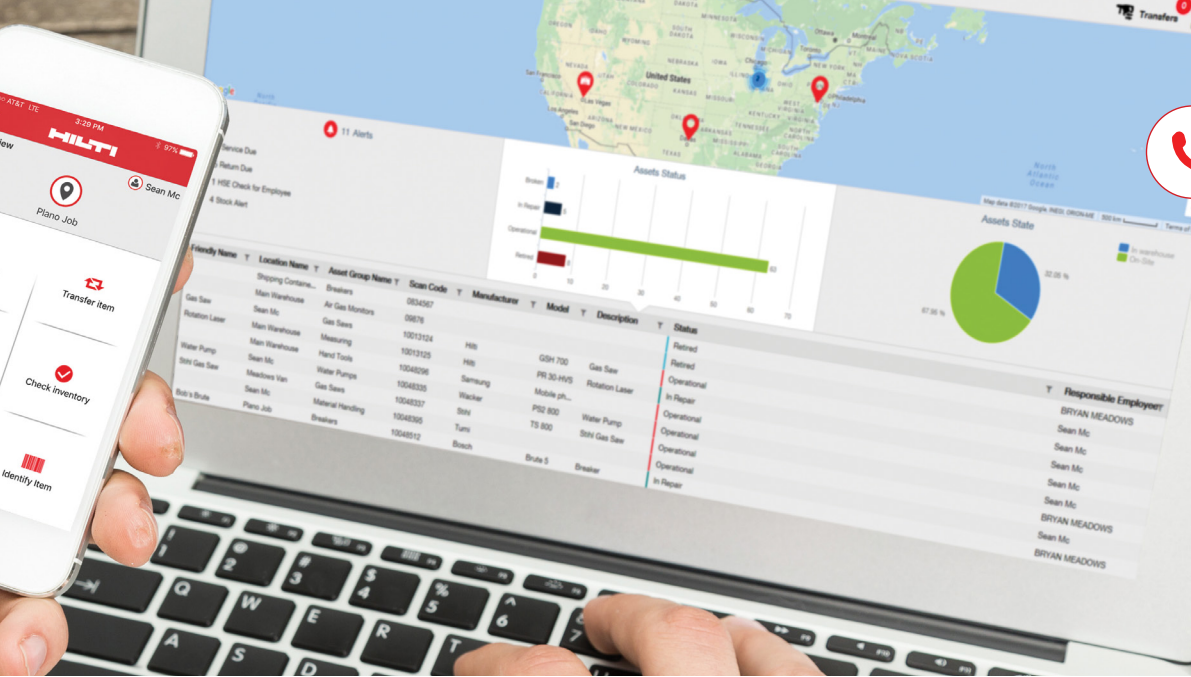
**Free smartphone app (iOS and Android) for an unlimited number of users**



### SERVICE

**Onsite consultation and training, asset tagging, data upload, and best-in-class customer support**





1-800-102- 6400



WRITE TO US

## PRODUCTS

EQUIPMENT & STRUCTURAL ANCHORING

GRATING & MULTIPURPOSE FASTENING

PIPING, ELECTRICAL, & INSTRUMENTATION SUPPORTS

DEMOLITION & DIAMOND CUTTING TOOLS

METAL GRINDING & CUTTING

FIRE PROTECTION SOLUTIONS

## SERVICES

ON!TRACK ASSET MANAGEMENT

HILTI TOOL WARRANTY

SOFTWARE SOLUTIONS & SERVICES

## WHAT IT TRACKS

ON!Track is designed to manage all of your assets irrespective of its brand or manufacturer. This tracking solution is adept at tracking more than just tools.



Service Maintenance Schedules



Inventory Min/Max for consumables



Track Delivery Equipment



Employee Trainings & Certification



Track Commodities



Jobsite Cost Allocation



Rental Equipment Return Dates



## CONTACT OUR ON!TRACK TEAM

Phone: 1800 102 6400 | Email: [ontrack.in@hilti.com](mailto:ontrack.in@hilti.com)

[More Info](#) →





# TOOL WARRANTY

2-1-3 warranty model for exceptional tool assurance!

Be worry-free with our unique warranty model ensuring optimum value for your money.



## WHY 2-1-3

We don't forget our customers after we make a sale. On the contrary, our relationship with our customers has just begun. Our 2-1-3 model is a way by which we nurture this relationship and assure our customers their money's worth. We deliver our customers the best quality in the engineering of products that guarantee top-notch standards of the tool-make. We are so confident of our products' caliber; we can give our customers an exemplary warranty model that leaves you worry-free for years.

## DECODING THE 2-1-3 WARRANTY MODEL



### 2 Years No Cost Warranty on Heavy Duty Tools

- Hilti resolves to repair your tool free of cost for 2 years from the date of purchase. This includes replacement of defective parts, wear and tear parts, labor cost, etc. It also includes free pick-up and delivery.



### 1 Month Repair Warranty

- Hilti will repair your tool for free within a month after your last charged repair. This also includes parts for wear and tear.



### 3 Years Repair Cost Limit (RCL)

- After the "No Cost period", Hilti will charge a maximum of 20% of the list price of a new tool for repairs. RCL is valid for 3 years from the date of purchase of the tool.



1-800-102- 6400



WRITE TO US

## PRODUCTS

EQUIPMENT &  
STRUCTURAL  
ANCHORING

GRATING &  
MULTIPURPOSE  
FASTENING

PIPING, ELECTRICAL,  
& INSTRUMENTATION  
SUPPORTS

DEMOLITION &  
DIAMOND CUTTING  
TOOLS

METAL GRINDING  
& CUTTING

FIRE PROTECTION  
SOLUTIONS

## SERVICES

ON!TRACK ASSET  
MANAGEMENT

## HILTI TOOL WARRANTY

SOFTWARE  
SOLUTIONS  
& SERVICES

## Terms and Conditions

### Some exceptions apply

- All Grinders, UD4, Gas saws DSH 700/900, UD4, Heavy Diamond Tools do not have a No Cost Period.
- Following tools are covered with a 2-Year No Cost Warranty TE 30, TE 50, TE 70AVR, TE 70-D/AVR, TE 700AVR, TE 500AVR, TE 800AVR, TE 1500, TE 1000AVR, TE 2000AVR, PM 4M, PS250/ PS1000, PR 30 / PR 2-HS, DD 160/DD HD 30/DD-ST 160, DD 200, DD 350, VC 20-U / DCH300.
- 1-Year No Cost Warranty applicable on TE800STD, TE 3000, DD120, Light Duty Tools - TE 1, TE2, TE 2-M, TE 7, TE 7C, TE 2A, TE 6A, UD 30, ST 1800, SIW 22A, SCM 22A, SID 14A, SFC 14A, PD5, PD-E, PD-I, PM2-LG, WSR 1400, GX 3 and HDE 500-A22.
- Wear and tear coverage excludes damage due to abuse, or use not in accordance with the tool operator's manual.
- Please refer to the detailed warranty policy for coverage and exclusion.

## CONTACT US

Customer Care Number  
**1800 102 6400**

Contact us for free pick up  
of your tool for repair



# SOFTWARE SOLUTIONS & SERVICES

Customized support for engineers

Our engineering software and services support you to identify effective solutions for your complex design problems in a fraction of the time.



## FASTENING SOFTWARE AND SERVICES

Simple, easy to use, and accurate solutions to meet your design requirements

### Design Software

#### PROFIS Anchor

A downloadable software solution that lets you perform post-installed anchor design with Hilti's post-installed mechanical or adhesive anchors, that are in accordance with latest European Technical approval guidelines.

[Download Profis Anchor](#) ↓

#### PROFIS Rebar

A downloadable software solution that lets you perform post-installed rebar design with Hilti's post-installed rebar systems, that are in accordance with latest European Technical approval guidelines – Technical Reports and European codes.

[Download Profis Rebar](#) ↓

#### PROFIS Anchor Channel

Provides the best features to quickly model and design embeds for a variety of geometries, base materials, and loading conditions. It is the industry leader in Anchor Channel design providing the user a simple and intuitive way to apply design considerations.

[Download Profis Anchor Channel](#) ↓

### Engineering Competence Center (ECC)

ECC is a competent and comprehensive team of technical specialists dedicated to resolving all your technical queries regarding anchors, rebar, firestop, and installation systems. Our team prepares a variety of reports on site testing, as well as Profis Anchor/Rebar and Installation System design reports.



1-800-102- 6400



WRITE TO US

## PRODUCTS

EQUIPMENT & STRUCTURAL ANCHORING

GRATING & MULTIPURPOSE FASTENING

PIPING, ELECTRICAL, & INSTRUMENTATION SUPPORTS

DEMOLITION & DIAMOND CUTTING TOOLS

METAL GRINDING & CUTTING

FIRE PROTECTION SOLUTIONS

## SERVICES

ON!TRACK ASSET MANAGEMENT

HILTI TOOL WARRANTY

## SOFTWARE SOLUTIONS & SERVICES

### On-site Testing Service

Whether it is testing anchors in unknown strata or evaluating the installation quality, our range of testers gives you the peace of mind by ensuring structural safety during execution.

[Schedule an on-site testing](#) 

## Firestop software and services

### Document Manager

Document Manager enables documentation of firestop penetrations, joints, fire doors, and other custom categories. It is a Cloud-based software used by back office administrators in combination with a mobile device application for installers/documenters.

[Download Document Manager](#) 

## CONTACT US

TeamEngineeringSupport.IN@hilti.com





## HILTI STORES

### Delhi

A 16, Block B-I, Mohan  
Co-operative Industrial Estate  
Limited, New Delhi,  
Delhi 110044

### Phone

011 4686 3300

### Mumbai

1 2 3 “Karma Stambh”, Ground  
Floor, Opp to Kailash Commercial  
Complex, MTNL Exchange, LBS  
Marg, Vikhroli West, Mumbai,  
Maharashtra 400083

### Phone

022 65727512

### Pune

Rachana Epicentre, Shop 2,  
B 64/C, Shivajinagar, Pune,  
Maharashtra 411005

### Phone

020 25512040

## HILTI SERVICE CENTERS

Jaipur

Jammu

Kochi

Kolkata

Lucknow

Bhubneshwar

Nagpur

Ahmedabad

Bangalore

Chandigarh

Chennai

Secunderabad

Gurgaon

Haridwar

Indore

Noida

Raipur

Hilti (India) Pvt Ltd.  
6th Floor | Building 8 | Tower C |  
DLF Cyber City | Phase-II |  
Gurgaon – 122 002

[www.facebook.com/HiltiGroup/](https://www.facebook.com/HiltiGroup/)  
[www.hilti.group](http://www.hilti.group)

